

TAHOE MASTER PLAN

- Backcountry
- Conservation
- Mixed-Use
- Recreation
- Residential
- Tourist
- Wilderness

NOTE: THE SCALE AND CONFIGURATION OF ALL INFORMATION SHOWN HEREON ARE APPROXIMATE ONLY AND ARE NOT INTENDED AS A GUIDE FOR DESIGN OR SURVEY WORK. REPRODUCTION IS NOT PERMITTED WITHOUT PRIOR WRITTEN PERMISSION FROM THE WASHOE COUNTY PLANNING AND BUILDING DIVISION.



PATH: G:\arcdata\planarea\ta\2018_AREAPLANMasterPlan.mxd

CERTIFICATION: THIS DOCUMENT HAS BEEN REVIEWED AND APPROVED AS AN ACCURATE REPRESENTATION OF THE ADOPTED ZONING MAPS OF WASHOE COUNTY, NEVADA, BY THE WASHOE COUNTY PLANNING AND BUILDING DIVISION.

DATE _____ DIRECTOR _____

**Community Services
Department**

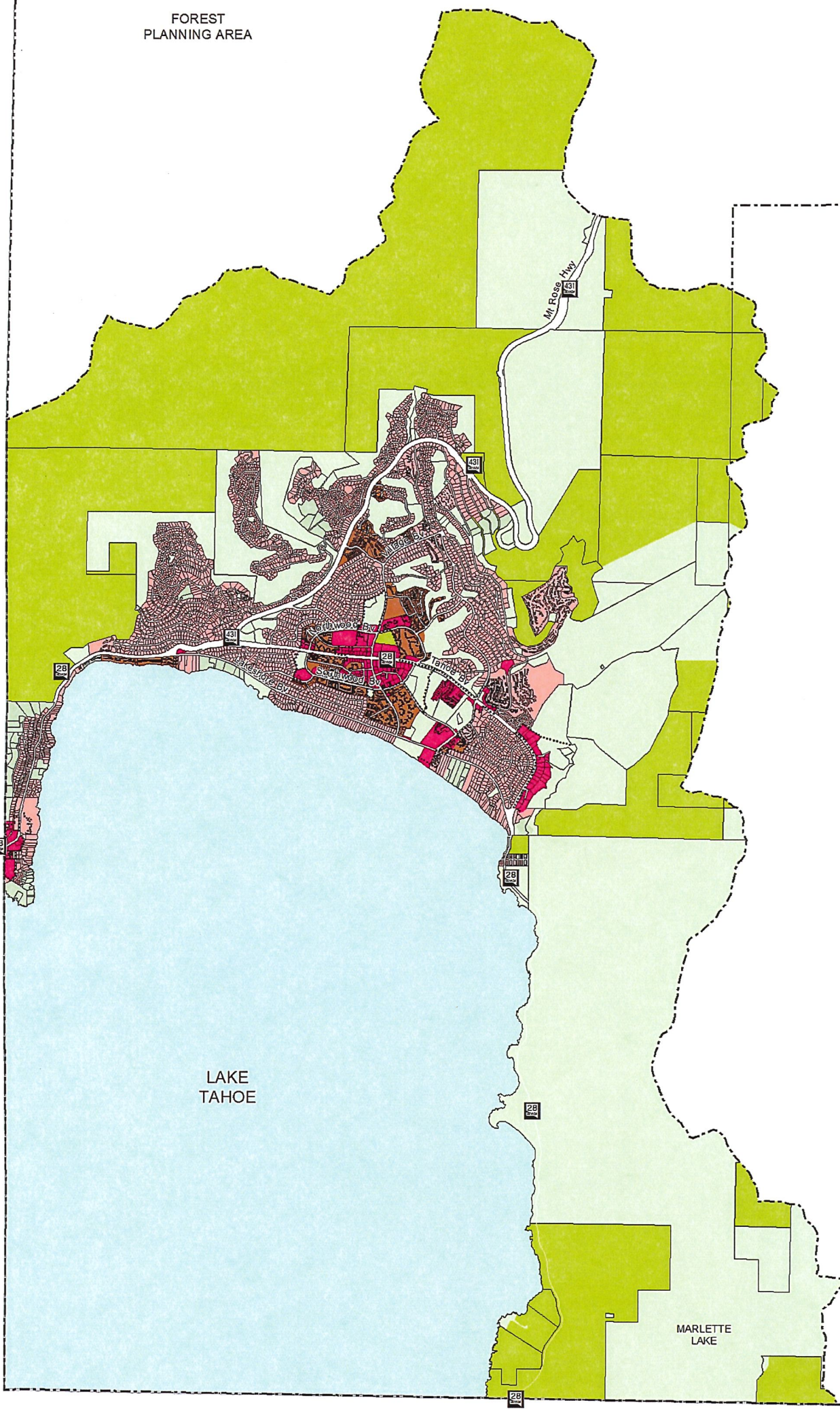
**WASHOE COUNTY
NEVADA**



Post Office Box 11130
Reno, Nevada 89520

(775) 328-3600

FOREST
PLANNING AREA



SOUTH VALLEYS
PLANNING AREA

LAKE
TAHOE

MARLETTE
LAKE

WASHOE COUNTY
CARSON CITY

..... Community Plan Boundaries
 - - - - - Planning Area Boundary

0 0.5 1
Miles

TAHOE MASTER PLAN MAP

- RURAL
- RURAL RESIDENTIAL
- SUBURBAN RESIDENTIAL
- URBAN RESIDENTIAL
- COMMERCIAL
- INDUSTRIAL
- OPEN SPACE

NOTE: THE SCALE AND CONFIGURATION OF ALL INFORMATION SHOWN HEREON ARE APPROXIMATE ONLY AND ARE NOT INTENDED AS A GUIDE FOR DESIGN OR SURVEY WORK. REPRODUCTION IS NOT PERMITTED WITHOUT PRIOR WRITTEN PERMISSION FROM THE WASHOE COUNTY PLANNING AND DEVELOPMENT DIVISION.



G:\arcdata\planarea\ta\maps\series\taMPA14-003.mxd

CERTIFICATION:
 THIS DOCUMENT HAS BEEN REVIEWED AND APPROVED AS AN ACCURATE REPRESENTATION OF THE ADOPTED MASTER PLAN MAPS OF WASHOE COUNTY, NEVADA, BY THE WASHOE COUNTY PLANNING AND DEVELOPMENT DIVISION.

DATE: 1/27/2015 DIRECTOR: William Whitney

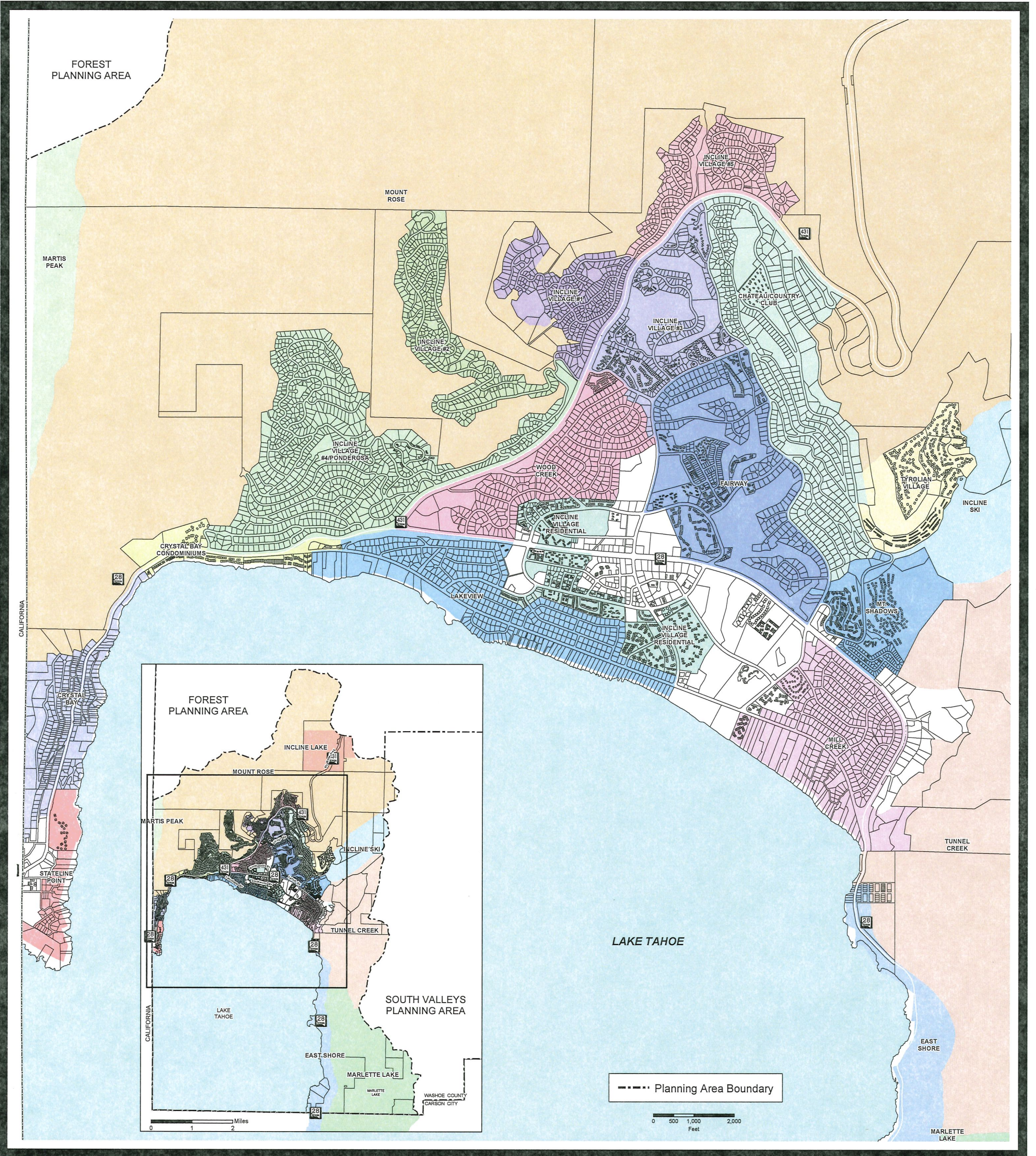
**Community Services
Department**

**WASHOE COUNTY
NEVADA**

Post Office Box 11130
Reno, Nevada 89520

(775) 328-3600

PC Date: December 2, 2014
 BCC Date: January 28, 2015
 TRPA DATE: January 14, 2015
 Adopting Resolution Date: January 27, 2015



TAHOE PLAN AREA STATEMENT

PLAN NAME		
CHATEAU/COUNTRY CLUB	INCLINE VILLAGE #1	MARTIS PEAK
CRYSTAL BAY	INCLINE VILLAGE #2	MILL CREEK
CRYSTAL BAY CONDOMINIUMS	INCLINE VILLAGE #3	MOUNT ROSE
EAST SHORE	INCLINE VILLAGE #4/PONDEROSA	MT. SHADOWS
FAIRWAY	INCLINE VILLAGE #5	STATELINE POINT
INCLINE LAKE	INCLINE VILLAGE RESIDENTIAL	TUNNEL CREEK
INCLINE SKI	LAKEVIEW	TYROLIAN VILLAGE
	MARLETTE LAKE	WOOD CREEK

NOTE: THE SCALE AND CONFIGURATION OF ALL INFORMATION SHOWN HEREON ARE APPROXIMATE ONLY AND ARE NOT INTENDED AS A GUIDE FOR DESIGN OR SURVEY WORK. REPRODUCTION IS NOT PERMITTED WITHOUT PRIOR WRITTEN PERMISSION FROM THE WASHOE COUNTY PLANNING AND DEVELOPMENT DIVISION.

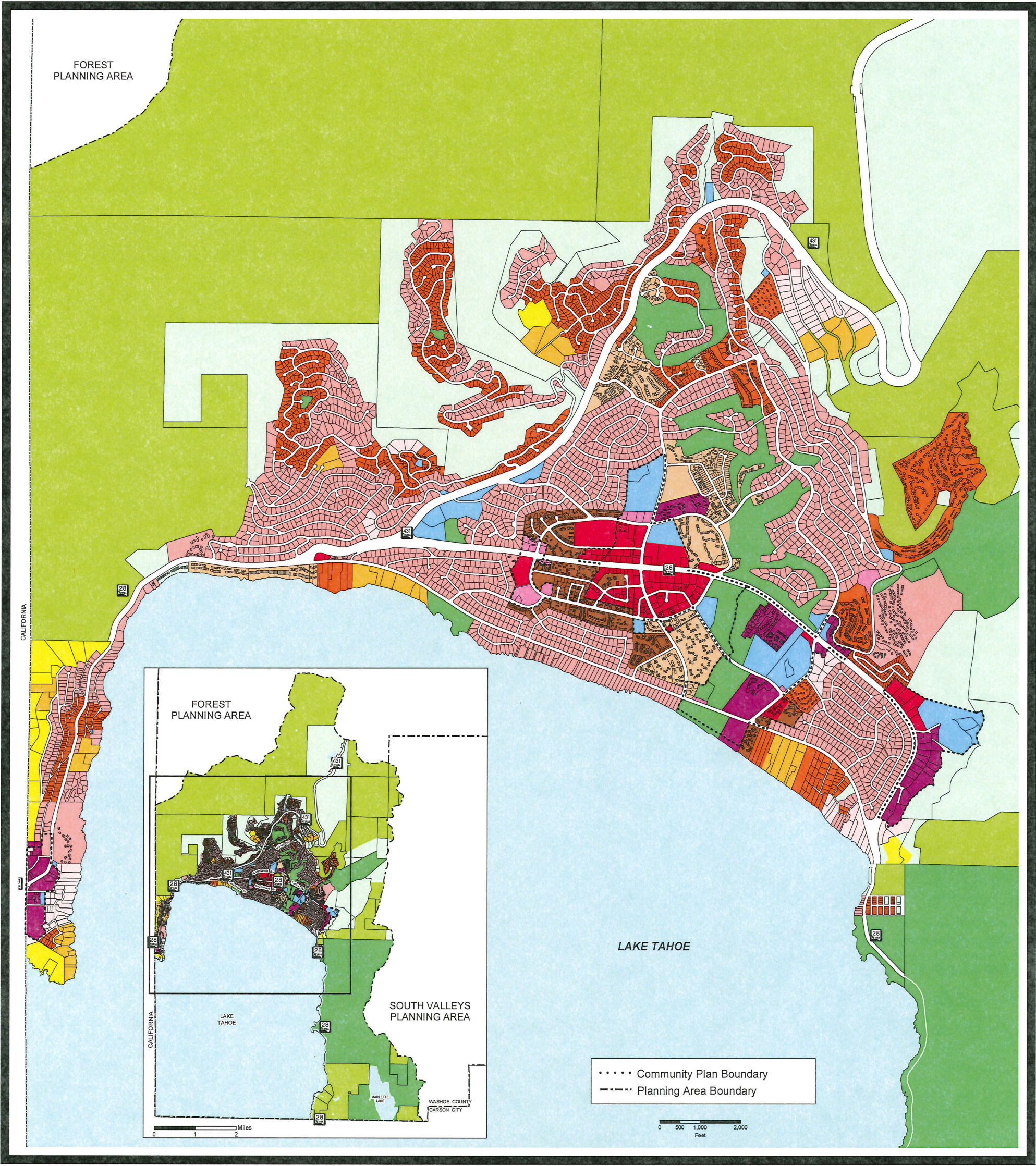
PATH: G:\aroddata\planarea\2018_AREAPLAN\Plan Area Statement.mxd

CERTIFICATION:
 THIS DOCUMENT HAS BEEN REVIEWED AND APPROVED AS AN ACCURATE REPRESENTATION OF THE ADOPTED ZONING MAPS OF WASHOE COUNTY, NEVADA, BY THE WASHOE COUNTY PLANNING AND DEVELOPMENT DIVISION.

DATE _____ DIRECTOR _____

**Community Services
Department**

**WASHOE COUNTY
NEVADA**
1861



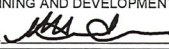
TAHOE REGULATORY ZONE MAP

- | | | |
|---|--|--|
|  LOW DENSITY RURAL |  HIGH DENSITY SUBURBAN |  INDUSTRIAL |
|  MEDIUM DENSITY RURAL |  LOW DENSITY URBAN |  PUBLIC AND SEMI-PUBLIC FACILITIES |
|  HIGH DENSITY RURAL |  MEDIUM DENSITY URBAN |  PARKS AND RECREATION |
|  LOW DENSITY SUBURBAN |  HIGH DENSITY URBAN |  OPEN SPACE |
|  LOW DENSITY SUBURBAN 2 |  GENERAL COMMERCIAL |  GENERAL RURAL |
|  MEDIUM DENSITY SUBURBAN |  NEIGHBORHOOD COMMERCIAL/OFFICE |  GENERAL RURAL AGRICULTURAL |
|  MEDIUM DENSITY SUBURBAN 4 |  TOURIST COMMERCIAL |  DRY LAKE/WATER BODY |

NOTE: THE SCALE AND CONFIGURATION OF ALL INFORMATION SHOWN HEREON ARE APPROXIMATE ONLY AND ARE NOT INTENDED AS A GUIDE FOR DESIGN OR SURVEY WORK. REPRODUCTION IS NOT PERMITTED WITHOUT PRIOR WRITTEN PERMISSION FROM THE WASHO COUNTY PLANNING AND DEVELOPMENT DIVISION.

PATH: G:\arcdata\planning\TahoeRegzone_final\WRZA18_0003.mxd

CERTIFICATION: THIS DOCUMENT HAS BEEN REVIEWED AND APPROVED AS AN ACCURATE REPRESENTATION OF THE ADOPTED ZONING MAPS OF WASHO COUNTY, NEVADA, BY THE WASHO COUNTY PLANNING AND DEVELOPMENT DIVISION.

DATE: 5/8/2018 DIRECTOR: 

**Community Services
Department**

**WASHO COUNTY
NEVADA**